

LOCKING PINS TO BE ASSEMBLED TO THE OUTSIDE OF STANDS. 4 PLACES.

DECAL LR 2500 LBS.

DECAL LF 2500 LBS.

DECAL RR 2500 LBS.

DECAL RF 2500 LBS.

UNLESS OTHERWISE SPECIFIED:	NAME	DATE
DIMENSIONS ARE IN INCHES	DRAWN	PJA 08/01/16
TOLERANCES:	CHECKED	
FRACTIONAL $\pm 1/32"$	ENG APPR.	
ANGLES: MACH $\pm .01^\circ$ BEND $\pm 1^\circ$	MFG APPR.	
TWO PLACE DECIMAL $\pm .03$	Q.A.	
THREE PLACE DECIMAL $\pm .025$		



TITLE:
ROLL BACK ALIGNMENT STANDS

C	28.000 WAS 24.000	12/07/18
B	ADDED DECALS PER ECO 10064	08/01/16
A	STANDS ARE THE SAME FRONT & REAR	03/28/16
REV.	DESCRIPTION	DATE
REVISIONS		

INTERPRET GEOMETRIC TOLERANCING PER: ANSI Y14.5

MATERIAL
ASSEMBLY

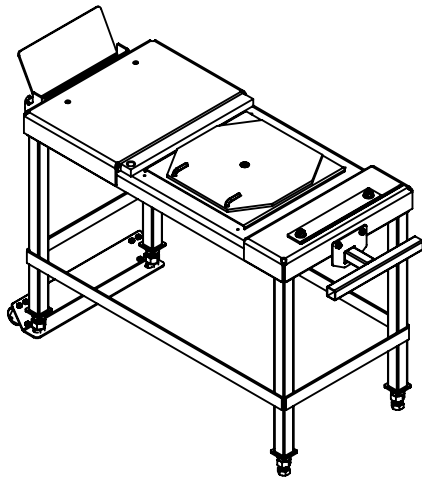
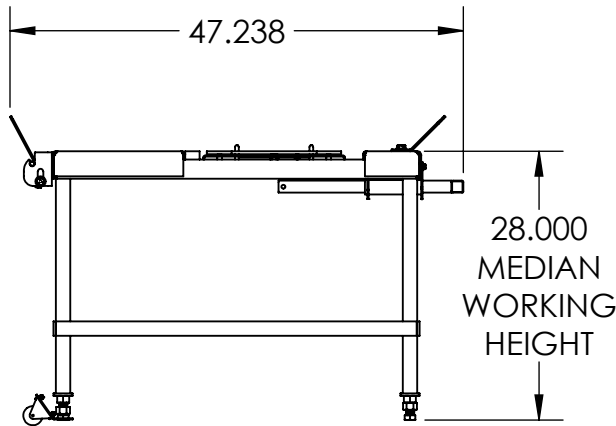
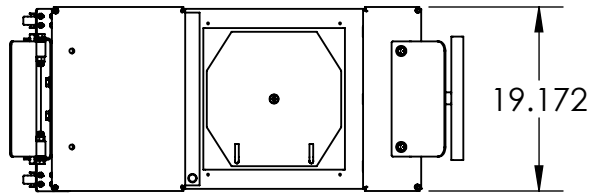
FINISH
-

DO NOT SCALE DRAWING

PROPRIETARY AND CONFIDENTIAL


THE INFORMATION CONTAINED IN THIS DRAWING IS THE SOLE PROPERTY OF QSP. ANY REPRODUCTION IN PART OR AS A WHOLE WITHOUT THE WRITTEN PERMISSION OF QSP IS PROHIBITED.

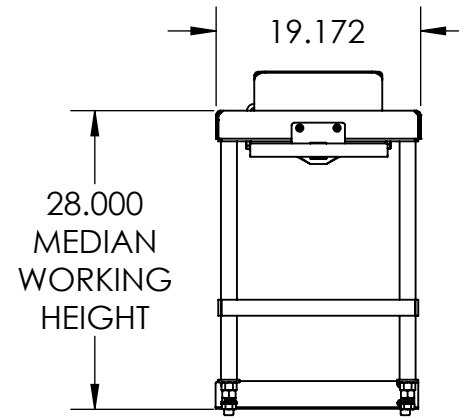
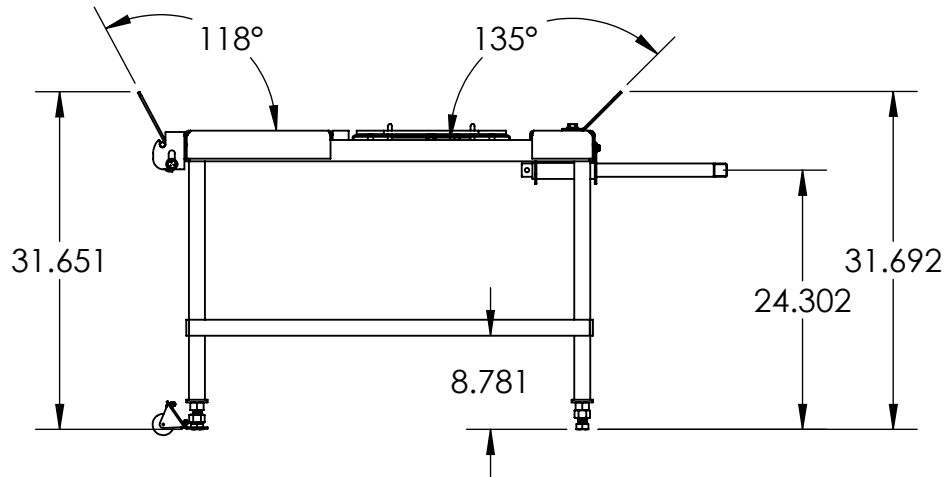
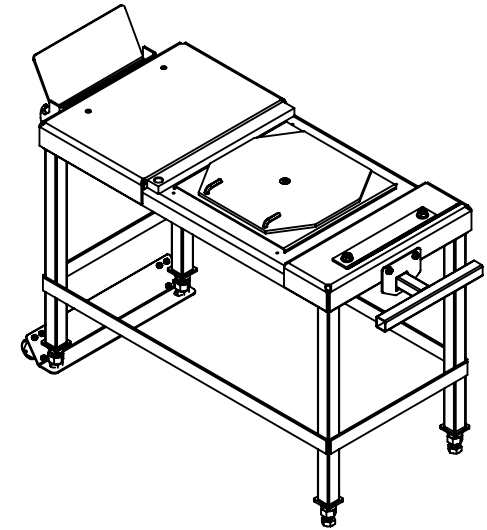
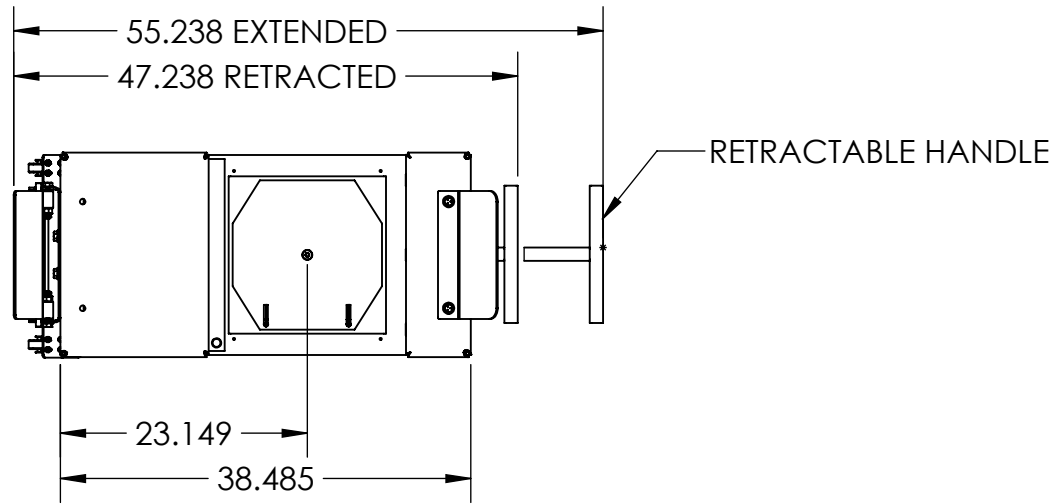
SIZE	DWG. NO.	REV
A	RB-24	C
SCALE: 1:24 WEIGHT: 159.499 SHEET 1 OF 3		



ITEM NO.	PART NUMBER	DESCRIPTION	QTY.
1	RB-24-100	ROLL BACK STAND-FRONT	4
2	RB-24-112	BRIDGE	4
3	RB-24-117	WHEEL STOP PIVOT ASSY	4
4	1-103	ANGLED WHEEL HOLDER	4
5	1-102	HANDLE WELDMENT	4
6	1-9461	CASTER	8
7	.25-20 x .62 HHCS	1/4-20 X 5/8 HHCS	32
8	DB-24-113	WHEEL STOP	4
9	.50-13 NYLOCK NUT	1/2-13 NYLOCK	16
10	.25-20 NYLOCK NUT	1/4-20 NYLOCK NUT	32
11	1-101	HANDLE RECEIVER	4
12	RB-24-114	SUPPORT PLATE	4
13	.312 -18 x 1 LG HHCS	5/16 x 18 x 1 HHCS	16
14	.312 FLT WASHER	5/16 FLT WASHER	16
15	.312-18 NYLOCK NUT	5/16-18 NYLOCK NUT	8
16	135-208	LOCK PIN	8
17	DB-24MD-DECAL	DECAL	4
18	.50 FLAT WASHER	1/2" FLAT WASHER	16
19	.5-13 X 3 INCH	1/2-13 X 3 LG HHCS	16

**FOR CLARITY; ONLY 1 STAND SHOWN
PART NUMBER CONTAINS 4 STANDS**

UNLESS OTHERWISE SPECIFIED: DIMENSIONS ARE IN INCHES TOLERANCES: FRACTIONAL $\pm 1/32$ " ANGLES: MACH $\pm .01^\circ$ BEND $\pm 1^\circ$ TWO PLACE DECIMAL $\pm .03$ THREE PLACE DECIMAL $\pm .025$	DRAWN	NAME	DATE	
	CHECKED	PJA	08/01/16	
INTERPRET GEOMETRIC TOLERANCING PER: ANSI Y14.5	ENG APPR.			TITLE: ROLL BACK ALIGNMENT STANDS
MATERIAL ASSEMBLY	MFG APPR.			SIZE DWG. NO. REV A RB-24 C
FINISH -	Q.A.			SCALE: 1:20 WEIGHT: 159.499 SHEET 2 OF 3
DO NOT SCALE DRAWING	PROPRIETARY AND CONFIDENTIAL THE INFORMATION CONTAINED IN THIS DRAWING IS THE SOLE PROPERTY OF QSP. ANY REPRODUCTION IN PART OR AS A WHOLE WITHOUT THE WRITTEN PERMISSION OF QSP IS PROHIBITED.			



**FOR CLARITY; ONLY 1 STAND SHOWN
PART NUMBER CONTAINS 4 STANDS**

UNLESS OTHERWISE SPECIFIED:		NAME	DATE	
DIMENSIONS ARE IN INCHES TOLERANCES: FRACTIONAL $\pm 1/32"$ ANGLES: MACH $\pm .01^\circ$ BEND $\pm 1^\circ$ TWO PLACE DECIMAL $\pm .03$ THREE PLACE DECIMAL $\pm .025$		DRAWN	PJA 08/01/16	
INTERPRET GEOMETRIC TOLERANCING PER: ANSI Y14.5		CHECKED		TITLE: ROLL BACK ALIGNMENT STANDS
MATERIAL ASSEMBLY		ENG APPR.		
FINISH -		MFG APPR.		SIZE DWG. NO. REV A RB-24 C
DO NOT SCALE DRAWING		Q.A.		
		PROPRIETARY AND CONFIDENTIAL		SCALE: 1:18 WEIGHT: 159.499 SHEET 3 OF 3
		THE INFORMATION CONTAINED IN THIS DRAWING IS THE SOLE PROPERTY OF QSP. ANY REPRODUCTION IN PART OR AS A WHOLE WITHOUT THE WRITTEN PERMISSION OF QSP IS PROHIBITED.		