

UNIVERSAL ROLLING JACKS

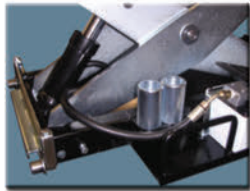
STANDARD DUTY

AIR BAG JACKS MODEL: J7000L

standard features include:
extended lift height
scissor design ensures
stable lifting
heavy-duty control valve
multi-level safety
dual hand controls
stackable adapters
smooth operation
adapter storage
convenient pull handle
self retracting coil hose
high gloss paint
zinc plated components
and accessories



Universal inline
roller assembly
fits many different
lifts



HD hydraulics &
adapter storage

HYDRAULIC JACKS MODELS: J6000H, J7500H, & J9000H

standard features include:
heavy-duty hydraulics
high quality pump
multi-level safety
dual hand controls
stackable adapters
extended lift height
smooth operation
adapter storage
convenient pull handle
self retracting coil hose
high gloss paint
zinc plated components
and accessories

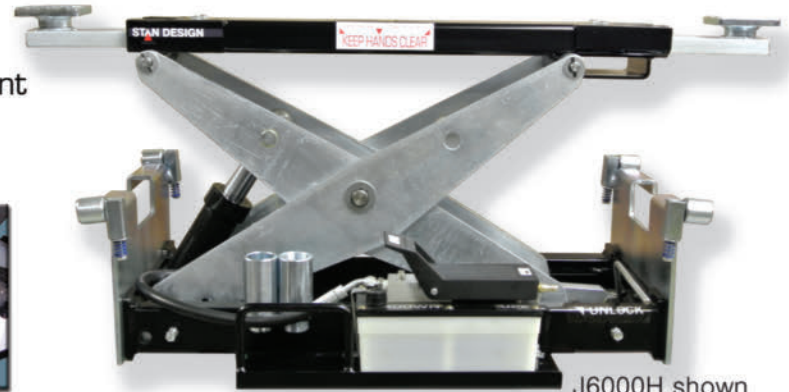


Multi-level lock
and HD steel

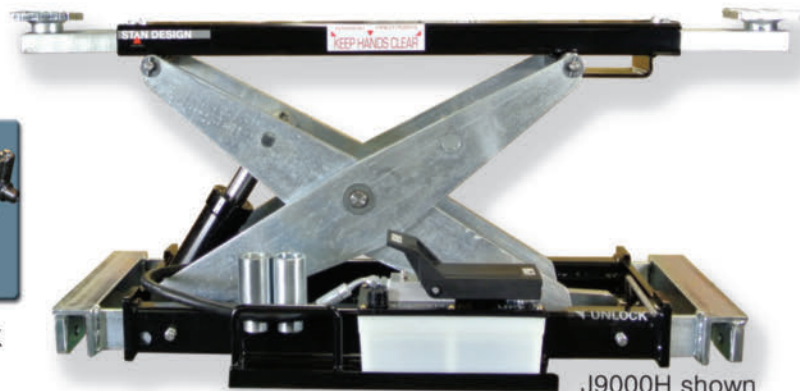


LOW BOY

7,000 lb. capacity J7000L shown
lowest collapsed height only 7"
extended lift height 10 1/4"
scissor design ensures stable lifting
compact design only 18" deep



6,000 lb. capacity J6000H shown
with pit wheel
assembly
extended lift height 11"
convenient pull handle and
adapter storage



9,000 lb. cap. J9000H shown
extended lift height 11"
Heavy-Duty hydraulics
Model J7500H 7,500 lb. cap.
also available

Accessories



6451

6452

6407

6453

6806

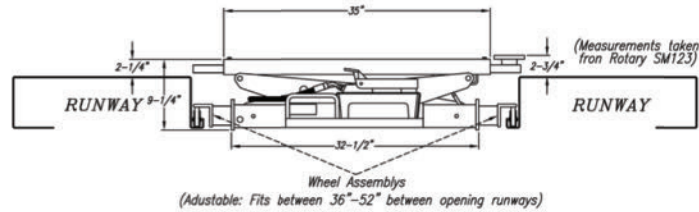
6807

UNIVERSAL ROLLING BRIDGE JACKS

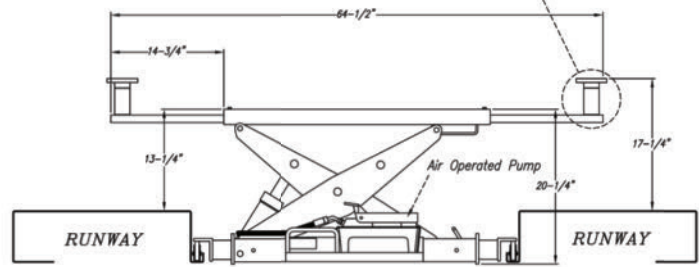
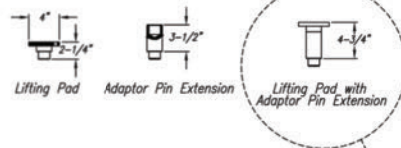
rolling jack specifications

STAN DESIGN

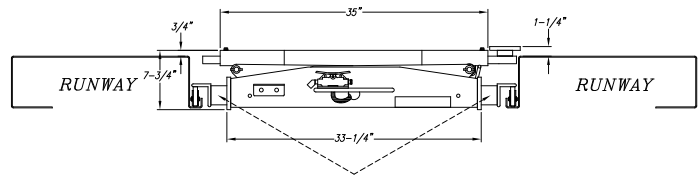
www.standesigninc.com



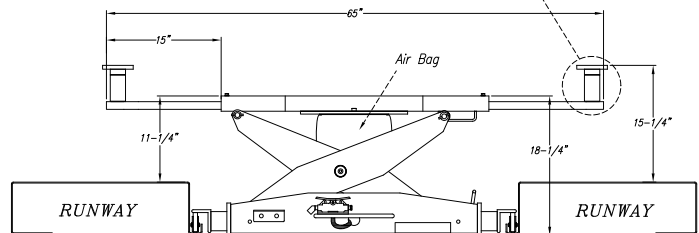
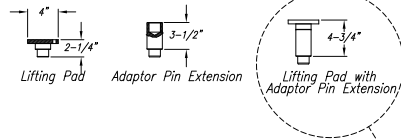
Wheel Assemblies
(Adjustable: Fits between 36"-52" between opening runways)



Jack Fully Raised with Arms extended



Wheel Assemblies
(Adjustable: Fits between 35"-47" between opening runways)



Jack Fully Raised with Arms extended

(866) 782-6529